



City LIFTS FOR ALL TYPES OF BUILDINGS

SIMPLE
AND
STYLISH
DESIGN

IVAS
ELEVATOR
City

IIMS

ELEVATOR





INTEGRITY, QUALITY, SUSTAINABILITY

We broke new ground in the Turkish Elevator Sector. We have started to produce the first spring- loaded rubber buffer whose design belongs to us. We continued our journey in the elevator sector by producing cabin and cabin carcass. In 2016 with the approval of the Turkish Ministry of Science Industry and Technology, we became the first Turkish Lift R&D Center with 100% Turkish capital.

Safety first

Has Elevator want to recognize security as a priority in all its endeavors. It creates more and more modern solutions that meet the highest global security standards. Our devices comply with the newest European standards. The EN 81-20/50, EN 81-58, EN 81-28, EN 81-72, EN 81-71 standard specifies updated requirements for the construction and installation of lifts while EN 81-21 specifies low shaft height. It is also possible to install elevators that comply with the previous standards. Please consult with Has Elevator Sales Representatives about new projects in order to choose the optimal device.

Exceptional ride comfort

Has Elevator has exceptional ride comfort with the last technology VVVF elevator drivers, extra quality components.

Design

The new collection of ready cabin designs refers to the latest trends in architecture
Space Saving

We provide lower shaft sizes than EN 81-21 standard

SIMPLE CHOICE IN THREE STEPS

Specification

1

Technical Specification

Has Elevator, due to the wide range of technical parameters, can ensure optimal transport in residential as well as office or hotel buildings. Choosing the right device is first and foremost to ensure transport capacity, appropriate to the size and type of building and how it is used. The following table contains basic design data. **WARNING!** The technical specifications contained in this brochure take into account the standards EN81-20 and EN 81-50.

HAS CITY	
Speed (m/s)	0,63 1,0 1,6 1,75
Capacity (kg)	320, 400, 450, 480, 525, 630, 680, 800, 900, 1000, 1150
Cabin dimensions	Standard size or special size for customers
Number of Stops	2 up to 32
Travel Distance (m)	100
Elevator Type	Dublex / Single

2

Standard and Equipment Options

Adaptation of the elevator to the specific needs of users is provided by additional elements of equipment. You can choose among them, for example, those that increase the safety of the device for low shaft with 81-21 standard, optimize the accessibility of the elevator for people with disabilities or improve its transport capacity.

3

Cabin Interior Design

Create your own interior concepts stylistically matching the interior of a building. Both we offer original materials and accessories for small modifications as well as for creating individual projects. You can create design that in your dreams with us.



CABIN
DECORATION
DESIGNS



HASCity 1

CEILING

Made of stainless steel

WALL

B: in brushed stainless steel

C: made of painted steel white with mirror

D: in brushed stainless steel

FLOOR

Made of PVC coating

HANDRAIL

Brushed stainless steel



HASCity 2

CEILING

Made of stainless steel

WALL

B: in brushed stainless steel

C: made of painted steel green with mirror

D: in brushed stainless steel

FLOOR

Made of PVC coating

HANDRAIL

Brushed stainless steel



HASCity 3

CEILING

Made of stainless steel

WALL

B: in brushed stainless steel

C: made of painted steel red with mirror

D: in brushed stainless steel

FLOOR

Made of PVC coating

HANDRAIL

Brushed stainless steel



HASCity 4

CEILING

Made of stainless steel

WALL

B: in brushed stainless steel

C: made of painted steel blue with mirror

D: in brushed stainless steel

FLOOR

Made of PVC coating

HANDRAIL

Brushed stainless steel



HASCity 5

CEILING

Made of stainless steel

WALL

B: in brushed stainless steel

C: made of brushed stainless steel

D: made of painted steel cloud white

FLOOR

Made of PVC coating

HANDRAIL

Brushed stainless steel



HASCity 6

CEILING

Brushed stainless steel

WALL

B: in brushed stainless steel

C: in brushed stainless steel

D: made of painted steel green

FLOOR

Made of PVC coating

HANDRAIL

Brushed stainless steel



HASCity 7

CEILING

Made of brushed stainless steel

WALL

B: in brushed stainless steel

C: in brushed stainless steel

D: made of painted steel Fire Brick

FLOOR

Made of PVC coating

HANDRAIL

Brushed stainless steel



HASCity 8

CEILING

Made of brushed stainless steel

WALL

B: in brushed stainless steel

C: in brushed stainless steel

D: made of painted steel Blue

FLOOR

Made of PVC coating

HANDRAIL

Brushed stainless steel



HASCity 9

CEILING

Made of brushed stainless steel

WALL

B: in brushed stainless steel

C: in brushed stainless steel with mirror

D: made of painted steel Fire Brick

FLOOR

Made of PVC coating

HANDRAIL

Brushed stainless steel



HASCity 10

CEILING

Made of brushed stainless steel

WALL

B: in brushed stainless steel

C: in brushed stainless steel with mirror

D: made of painted steel green

FLOOR

Made of PVC coating

HANDRAIL

Brushed stainless steel



HASCity 11

CEILING

Made of brushed stainless steel

WALL

B: in brushed stainless steel

C: in brushed stainless steel with mirror

D: made of painted steel fire brick

FLOOR

Made of PVC coating

HANDRAIL

Brushed stainless steel



HASCity 12

CEILING

Made of brushed stainless steel

WALL

B: in brushed stainless steel

C: in brushed stainless steel with mirror

D: made of painted steel blue

FLOOR

Made of PVC coating

HANDRAIL

Brushed stainless steel



HASCity 13

CEILING

Made of brushed stainless steel with spotlights

WALL

B: in brushed stainless steel

C: in brushed stainless steel with mirror

D: made of painted steel white

FLOOR

Made of PVC coating

HANDRAIL

Brushed stainless steel



HASCity 14

CEILING

Made of brushed stainless steel with spotlights

WALL

B: in brushed stainless steel
C: in brushed stainless steel with mirror
D: made of painted steel white

FLOOR

Made of PVC coating

HANDRAIL

Brushed stainless steel



HASCity 102

CEILING

Made of brushed stainless steel

WALL

B: in brushed bronze stainless steel

C: made of painted steel white

D: in brushed bronze stainless steel

FLOOR

Made of PVC coating

HANDRAIL

Brushed stainless steel



HASCity 103

CEILING

Made of brushed stainless steel

WALL

B: in brushed gold stainless steel

C: made of painted steel white

D: in brushed gold stainless steel

FLOOR

Made of PVC coating

HANDRAIL

Brushed stainless steel



HASCity 101

CEILING

Made of brushed stainless steel

WALL

B: in brushed stainless steel

C: in brushed stainless steel

D: in brushed stainless steel

FLOOR

Made of PVC coating

HANDRAIL

Brushed stainless steel



MATERIALS
AND
ACCESSORIES

Wall Coverings

Painted Steel



RAL 9001



RAL 3005



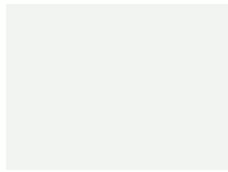
RAL 1007



RAL 6005



RAL 5010



RAL 9003



RAL 3000



RAL 1023



RAL 6027



RAL 5000

Stainless Color



Stainless



Stainless Gold



Stainless Bronze

Decorative Stainless



Mirror Ti-CX-37



Mirror Ti-Gold-CX-37



Mirror -CX-16



Mirror Ti-Gold-CX-16



Mirror Ti-Rose-CX-16



Mirror CX-53



Mirror Ti-Gold-CX-53



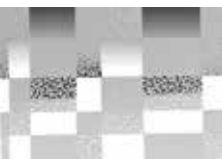
Mirror Ti-Rose-CX-58



Mirror CX-53



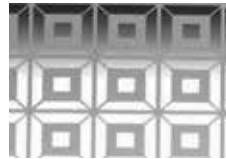
Mirror Ti-Gold-CX-53



Mirror CX-51



Mirror Ti-Gold-CX-51



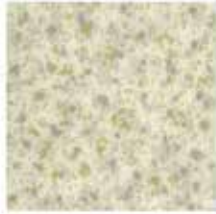
Mirror CX-41



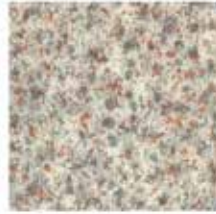
Mirror Ti-Gold CX-53

Floor Coverings

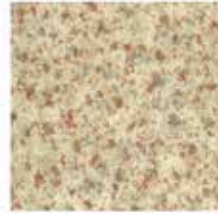
PVC Floor



2120-31



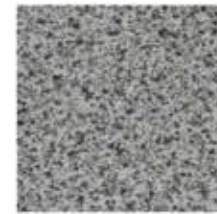
2120-34



2120-35



2120-36



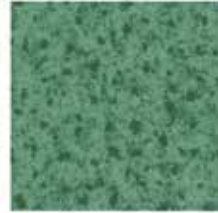
2120-53



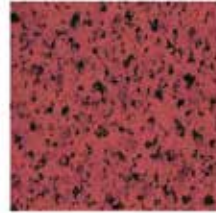
2120-37



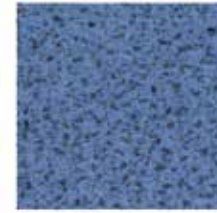
2120-39



2120-44



2120-45



2120-52



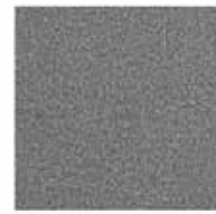
2120-50



2120-51



2800-1



2800-3



2800-5



2800-7



2800-9



2800-10



2800-11



2800-13

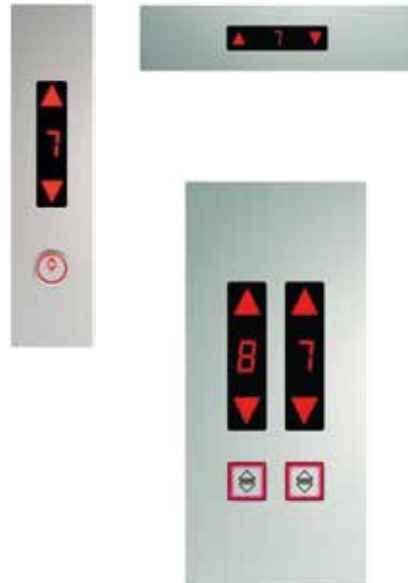
Operating Panels



3735 Cabin Button

Front Panel: Satine Stainless
 Signaling: 24V
 Lighting: LED LED
 Color: Red, Blue
 Dimensions: 200 x 17 x 0.2 cm
 Mounting Type: Recessed Mounted

Hall Buttons



3634 Cabin Button

Front Panel: Satine Stainless
 Signaling: 24V
 Lighting: LED LED
 Color: Red, Blue
 Dimensions: 100 x 21.5 x 3.5 cm
 Mounting Type: Surface Mounted

Hall Buttons



Operating Panels

F600 Cabin Button

- 2mm Stainless steel cover.
- All elements are mounted on the cover.
- Stainless pressing area.
- Lighting long-lasting, maintenance free 12/24 v. Led. (red, blue, green, white)
- Homogeneous lighting.
- 38mm 7segment disk. (arrow direction) 12/24 v. LED (red, blue, green, white)



Hall Buttons



F520 Cabin Button

- 2mm Stainless steel cover.
- All elements are mounted on the cover
- Stainless pressing area.
- Lighting long-lasting, maintenance free /24 v. Led. (red, blue, green, white)
- Homogeneous lighting.
- 38mm 7segment disk. (arrow direction) 12/24 v. LED (red, blue, green, white)



Hall Buttons



Ceiling



LED panel lighting



LED panel lighting



LED panel lighting



LED panel lighting



LED panel lighting



LED panel lighting



LED panel lighting



Spot panel lighting



Spot panel lighting

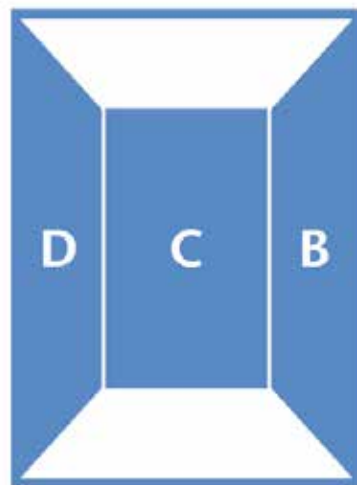
Handrail



Rounded stainless handrail



Rounded, curved stainless handrail



The cabin wall signs as shown in the picture



TECHNICAL SPECIFICATIONS

EN 81-20, EN 81-50

HASCity MRL

Specification HASCity

Speed (m/s)	Lifting capacity (kg)	Maximum number of stops
1	320 - 2500	2 up to 30
1,6	320 - 2500	2 up to 30
1,75	320 - 2500	2 up to 30

Overhead (OH)

Speed (m/s)	Ceiling(mm)
1,0*	CH + 1250
1,6*	CH + 1400
2*	CH + 1500

Speed (m/s)	Standard depth (mm)	The minimum depth for a low safety zone (Mm)
1,0	1130/1250**	500***
1,6	1230*/1350**	
2	1300*/1425**	

* Can change machine stemp

** Can change capacity

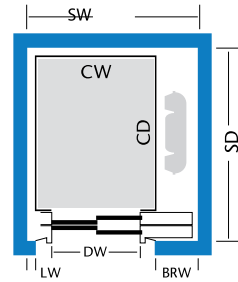
*** Special car frame design

Note:

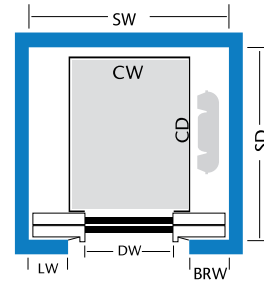
Door with frame or narrow frame

Single-door cabin (SEC)

Otwierane jednostronnie

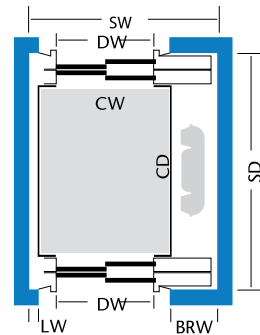


Otwierane centralnie

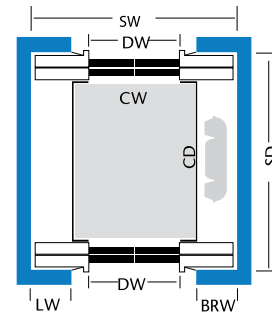


Pass-through cabin (TTC)

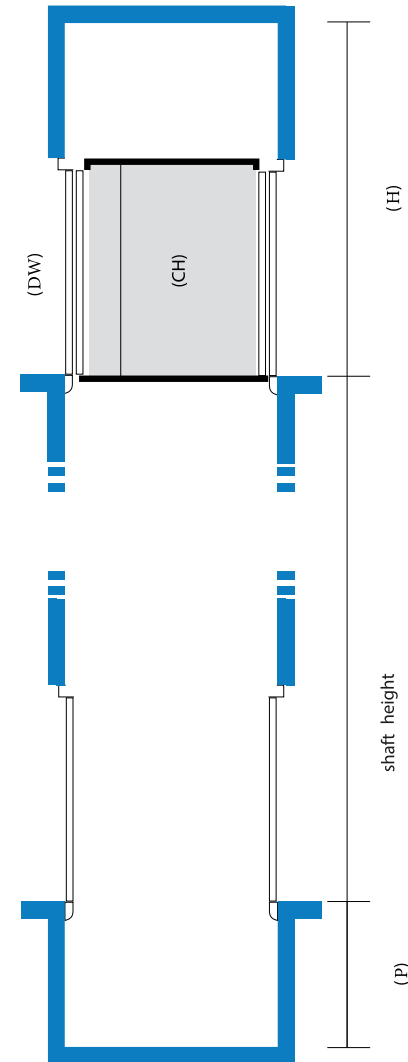
Otwierane jednostronnie



Otwierane centralnie



- CW - Cabin Width
- CD - Cabin Depth
- RW - Right wall well width
- LW - Left wall well width
- DW - Door Width
- SW - Shaft Width
- SD - Shaft Depth
- CH - Cabin Height
- P - Shaft Depth
- OH - Overhead
- DW - Door Height



CENTER DOOR

CENTER OPENED DOOR						SD minimum (mm)		Width of the front wall face elements		
Capacity (kg)	CW (mm)	CD (mm)	number of passengers	DW (mm)	SW (mm)	SEC	TTC	LW (mm)	RW (mm)	LR (mm)
450	1000	1250	6	700	1550	1530	1650	305	305	940
450	1000	1250	6	800	1750	1530	1650	355	355	1040
630*	1100	1400	8	800	1750	1680	1800	355	355	1040
630	1100	1400	8	900	1950	1680	1800	405	405	1140
800	1350	1400	10	800	1950	1680	1800	455	455	1040
800	1350	1400	10	900	1950	1680	1800	405	405	1140
800	1340	1400	10	1000	2150	1680	1800	455	455	1240
900	1400	1500	12	800	2000	1780	1900	480	480	1040
900	1400	1500	12	900	2000	1780	1900	430	430	1140
900	1400	1500	12	1000	2150	1780	1900	455	455	1240
1000	1100	2100	13	800	1950	2380	2500	355	355	1040
1000*	1100	2100	13	900	1950	2380	2500	405	405	1140
1000*	1300	1800	13	900	1950	1980	2200	405	405	1140
1000*	1300	1800	13	1000	2150	1980	2200	455	455	1240
1000*	1300	1800	13	1100	2350	2080	2300	505	505	1340
1000	1400	1600	13	900	2000	1880	2100	430	430	1140
1000	1400	1600	13	1000	2150	1880	2100	455	455	1240
1000	1400	1600	13	1100	2350	1880	2100	505	505	1340
1000	1600	1400	13	900	2200	1680	1900	530	530	1140
1000*	1600	1400	13	1000	2200	1680	1900	480	480	1240
1000	1600	1400	13	1100	2350	1680	1900	505	505	1340
1200	1200	2100	15	900	1950	2380	2500	405	405	1140
1200	1200	2100	15	1000	2200	2380	2500	480	480	1240
1200	1400	1850	15	900	2000	2130	2250	430	430	1140
1200*	1400	1850	15	1000	2150	2130	2250	455	455	1240
1200	1400	1850	15	1100	2350	2130	2250	505	505	1,340

CENTER OPENED DOOR						SD minimum (mm)		Width of the front wall face elements		
Capacity (kg)	CW (mm)	CD (mm)		DW (mm)	SW (mm)	SEC	TTC	LW (mm)	RW (mm)	LR (mm)
320**	800	1100	4	700	1350	1450	1600	325	85	940
320**	900	1000	4	800	1450	1350	1500	325	55	1040
400**	800	1200	5	700	1350	1550	1700	325	85	940
400**	900	1200	5	800	1450	1550	1700	355	55	1040
400	900	1100	5	700	1450	1450	1600	375	135	940
400	1000	1100	5	800	1550	1450	1600	375	135	1040
450	1000	1200	6	800	1550	1550	1700	375	135	1040
450*	1000	1200	6	900	1600	1550	1700	405	55	1140

TELESCOP IC

DOOR OPENED unilaterally						SD minimum (mm)		Width of the front wall face elements		
Udźwig (kg)	BB (mm)	DD (mm)	Liczba pasażerów	LL (mm)	WW nominalna (mm)	SEC	TTC	FW (mm)	FW1 (mm)	LR (mm)
450	950	1300	6	700	1500	1650	1800	450	160	940
450	950	1300	6	800	1500	1650	1800	400	110	1040
450	950	1300	6	900	1600	1650	1800	425	35	1140
450	1000	1250	6	800	1550	1600	1850	375	135	1040
450	1000	1250	6	900	1600	1600	1850	405	55	1140
525	1050	1250	7	800	1600	1600	1850	400	160	1040
525	1050	1250	7	900	1600	1650	1860	370	30	1200
525	1050	1300	7	800	1600	1650	1900	400	160	1040
525	1050	1300	7	900	1600	1650	1500	405	55	1140
630	1100	1400	8	800	1650	1750	2000	425	185	1040
630	1100	1400	8	900	1650	1750	2000	425	85	1140
630	1200	1300	8	900	1750	1650	1900	425	185	1140
630	1200	1300	8	1000	1750	1650	1900	475	35	1240
675	1200	1400	9	900	1750	1750	2000	425	85	1140
675	1200	1400	9	1000	1750	1750	2000	475	35	1240
800	1350	1400	10	800	1950	1750	2000	580	330	1040
800	1350	1400	10	900	1550	1750	2000	530	280	1140
800	1350	1400	10	1000	1950	1750	2000	480	230	1240
900	1400	1500	12	800	2000	1850	2100	600	360	1100
900	1400	1500	12	900	2000	1850	2100	550	310	1140
900	1400	1500	12	1000	2000	1850	2100	500	260	1240
1000	1100	2100	13	800	1700	2450	2600	455	205	1040
1000	1100	2100	13	900	1700	2450	2600	455	105	1140
1000*	1100	2100	13	1000	1750	2450	2600	455	55	1240
1000	1300	1800	13	900	1900	2150	2300	505	255	1140
1000	1300	1800	13	1000	1900	2150	2300	505	155	1240
1000	1400	1600	13	900	2000	1950	2100	555	305	1140
1000	1400	1600	13	1000	2000	1950	2100	505	255	1240
1000	1450	1550	13	900	2050	1900	2050	580	330	1140
1000	1450	1550	13	1000	2050	1900	2050	530	280	1240
1150	1200	2100	15	900	1800	2450	2600	455	205	1140
1200	1200	2100	16	1000	1800	2450	2600	485	75	1240
1200	1200	2100	16	1100	1950	2450	2600	525	85	1340
1200	1400	1850	16	900	2000	2200	2350	555	305	1140
1200	1400	1850	16	1000	2000	2200	1350	505	225	1240
1200	1400	1850	16	1100	2000	2200	2350	555	105	1340

SD - Shaft Depth, CW - Cabin Width, CD - Cabin Depth, RW - The width of the front wall on the drive side (Right Wall) LW - The width of the front wall opposite the drive (Left Wall)
 DW - Door Width, LR - The width of the door opening in reinforced concrete, SW - Shaft Width SEC - Cabin with single doors TTC - Pass-through cabin



IMAS
ELEVATOR
City

f / hasasansorbursa

t / hasasansor

i / hasasansor



www.hasasansor.com

HAS
ELEVATOR

Ankara Cad. 13. km No: 77 16450 Kestel

BURSA / TÜRKİYE

Tel: +90 224 373 10 00

Faks: +90 224 373 10 05

info@hasasansor.com